

SCOTLAND'S NATIONAL ACADEMY

New Fellows 2022

RSE

*The Royal Society
of Edinburgh*

KNOWLEDGE MADE USEFUL



© Hannah Mantz

© Daisy Honeybunn

© Malcolm Cochrane Photography

Contents

- 1** Welcome from our President
- 2** Welcome from our Fellowship Secretary
- 3** RSE governance
- 4** RSE staff
- 5** Aims and objectives
- 6** Fellows quotes
- 7** Inspire
- 9** Engage
- 11** Provide expertise
- 13** Promote
- 15** Young Academy of Scotland
- 16** Other information
- 17** Honorary Fellow
- 18** Corresponding Fellows
- 19** Fellows

Welcome from our President

Many congratulations on your election as a Fellow of the Royal Society of Edinburgh!



I hope you will enjoy the RSE and become involved in its activities. While being a Fellow is an honour, it also offers you opportunities to contribute to our work as Scotland's National Academy which I hope you will embrace.

The RSE combines policy and public engagement with a commitment to high standards of research and scholarship, backed up by a high quality professional staff. Unusually for a national academy, we span the whole range of natural sciences, social sciences, humanities, creative arts and the professions. This makes us truly interdisciplinary and allows us to engage in matters at the interface of disciplines, which is where some of the most interesting and stimulating questions are to be found. It also challenges us to think about different forms of knowledge and how they relate to each other. Pressing issues such as climate change, pandemics, artificial intelligence and social inequality raise new questions which cannot be addressed only from a single perspective.

The RSE relies on Fellows not just to contribute to our work but to come up with new ideas and activities. So please, if you have a proposal, or just an idea, do get in touch with me (President@therse.org.uk) or the RSE General Secretary Professor Michael Keating (GeneralSecretary@therse.org.uk). We don't have a lot of spare resources but we do have a committed and enthusiastic Fellowship, national and international contacts and a good knowledge of opportunities for research and engagement. Remember that you all have the right to nominate candidates for the Fellowship every year, and when doing so please bear in mind the RSE's commitment to diversity.

I look forward to meeting you all in person and to working with you.

Professor Sir John Ball
PRSE FRS

Welcome from our Fellowship Secretary



Welcome to all
our new Fellows!

Today's event is one of the highlights of our events calendar, providing an occasion to celebrate our new Fellows, to introduce the RSE council and staff, and crucially, for you to meet each other. This year is RSE's first hybrid face-to-face/online ceremony to celebrate your many and diverse achievements and to provide you with the introductions and information required to begin your engagement with the wider RSE fellowship.

Considering Scotland's size, our talent exceeds expectations across academia, culture and business. Celebrating and harnessing this breadth of expertise has been core to the RSE since its inception in 1783. The RSE's aim is to provide society with 'knowledge made useful'. The world is seeing unprecedented challenges that require truly multidisciplinary knowledge.

The accelerating impacts of climate change, the conflict in Ukraine and elsewhere, and the effects of the Covid-19 pandemic have created unprecedented shocks to our ways of life, energy systems, food security and economy. But alongside these challenges come opportunities for new technologies and approaches to deliver a sustainable and socially just future for the people of Scotland and the globe.

As a genuinely multidisciplinary Academy, RSE is well-placed to draw on the expertise of our outstanding Fellows to contribute substantially to the public discourse around these and other societal challenges.

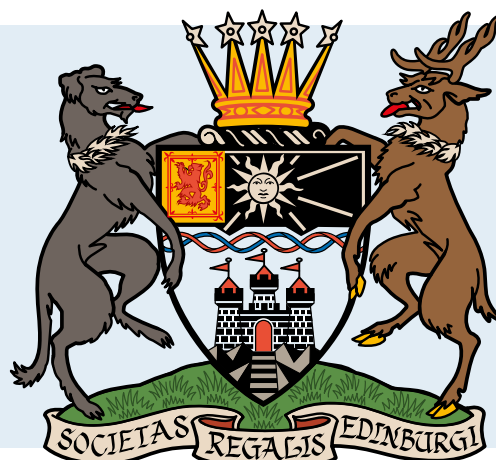
The RSE welcomes suggestions from Fellows for activities. If you have any ideas for activities or just want to find out more about how the RSE operates and how you can help, please contact us on fellowship@therse.org.uk.

I very much look forward to welcoming you all to the Fellowship of the RSE and to working with you to deliver our mission of knowledge made useful.

Professor Zoe Shipton
OBE FRSE

RSE governance

The Royal Society of Edinburgh (RSE) is Scotland's National Academy.



The Fellowship elect a Council who are responsible under the RSE's Laws for governing the Society. Members of Council are the trustees of the Society as a registered charity and are collectively responsible for the policy and management of the Society in accordance with charity legislation.

Council and Office-Bearers 2022

COUNCIL

President

Sir John Ball

Vice Presidents

Professor Russell Morris
(Physical Sciences)

Professor Andrea Nolan
(Life Sciences)

Professor Jeremy Peat
(Business)

Professor Stephen Reicher
(Arts, Humanities and Social Sciences)

Professor Mona Siddiqui
(International)

General Secretary

Professor Michael Keating

Treasurer

John Waddell

Fellowship Secretary

Professor Zoe Shipton

Ordinary Members

Professor Anne Anderson OBE

Professor Roger Crofts CBE

Professor Jim Gallagher

Bruce Minto OBE

Professor Stuart Monro OBE

Observers

Professor Gordon Masterton OBE

OTHER OFFICE BEARERS

Curator

Professor Kate Rudy

Young People's Programme Convener

Professor Jeremy Smith

Programme Convener

Professor Martin Hendry MBE

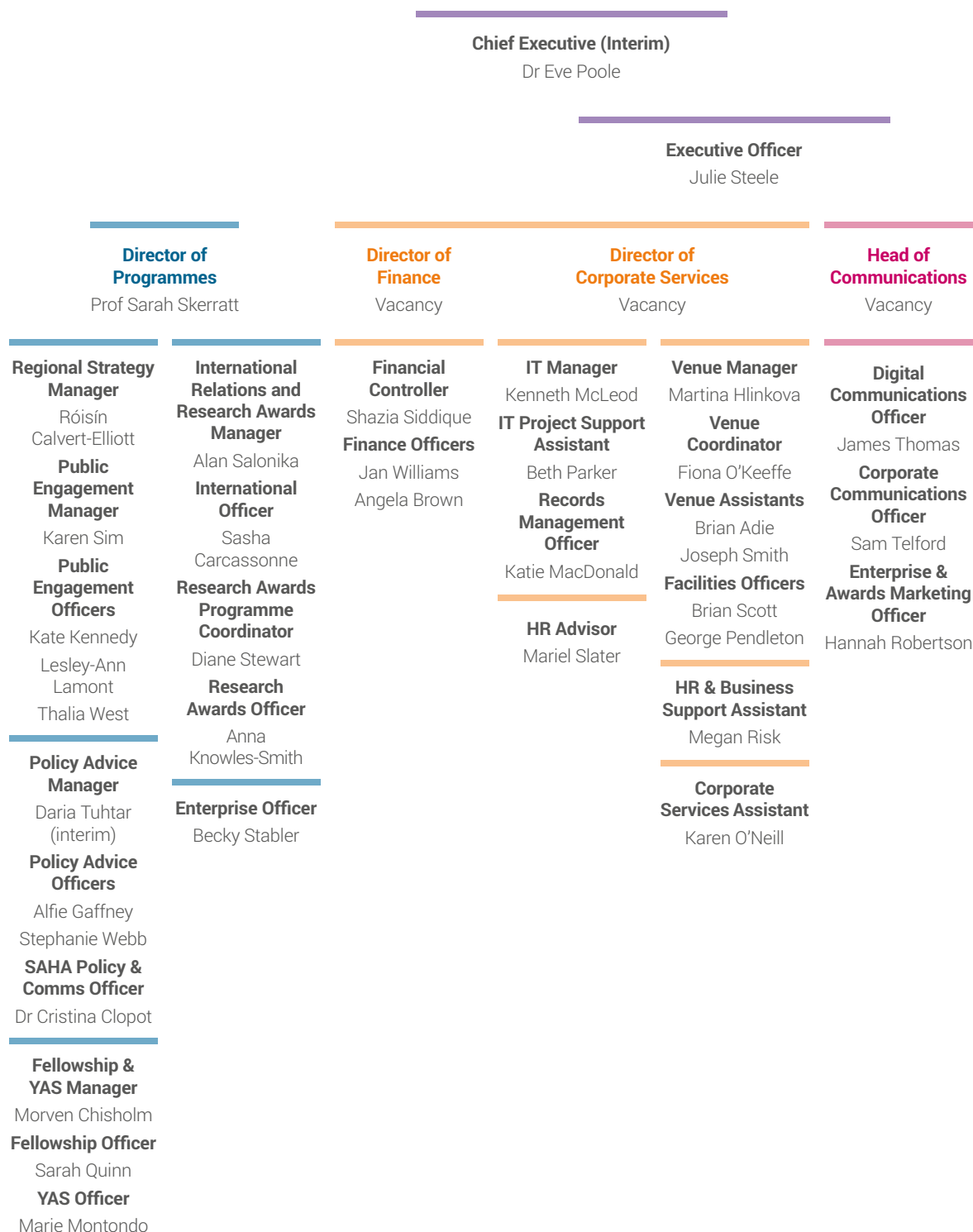
Research Awards Convener

Professor Charles Withers

Education Committee Convener

Dr Janet Brown

RSE staff



Aims and objectives

Knowledge made useful

The RSE, Scotland's National Academy, was established in 1783 for 'the advancement of learning and useful knowledge'. Our contemporary mission remains the same – the deployment of knowledge for public good: knowledge that contributes to the social and economic wellbeing of Scotland and its people and the nation's wider contribution to the global community.

We deliver on this mission through our strategic objectives and impacts to:

Inspire

Inspire and support Scotland's most promising young talent across the research, business and public sectors, in order to create value for the economy and society.

Enhance research capacity and leadership in Scotland.

Strengthen Scotland's cross-sector connections and its ability to realise benefits from its research and innovation.

Engage

Engage on key contemporary issues by providing an impartial forum for public debate and discussion.

Enhance the public's contribution to and engagement with contemporary national and global scientific, cultural and economic issues.

Provide Expertise

Provide expertise to ensure that Scotland's policy makers and influencers have access to the best national, and indeed global, expertise.

Inform and influence public policy.

Promote

Promote Scotland's interests and reputation on the global stage.

Raise Scotland's profile and strengthen its connections with the world.

Fellows quotes

"The RSE combines policy and public engagement with a commitment to high standards of research and scholarship, backed up by a high quality professional staff."

Professor Sir John Ball PRSE FRS,
President

"Public engagement and learning from the public about their expectations of science is hugely rewarding and illuminating and a wonderful way of expanding research, its outcomes and impact."

Professor Niamh Nic Daeid FRSE,
on presenting public talks and activities
on behalf of the RSE

"I have found it immensely rewarding to contribute in a small way to the RSE's global impact."

Professor David Price FRSE,
Member of RSE Africa Working Group

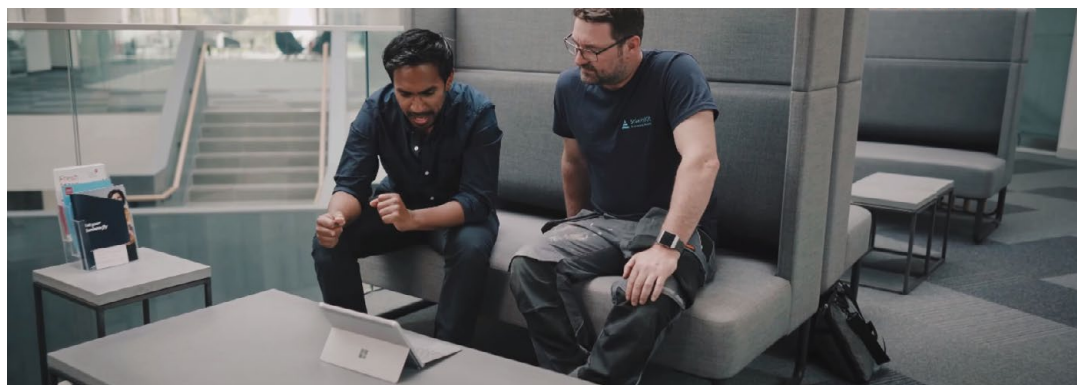
"As Fellows of the RSE we have opportunities to make a difference, by making our knowledge useful. Given the expertise of its Fellowship, the RSE has a rich resource to draw from when contributing to, leading and shaping our society; and this is something we can all play a part in."

Professor Marian Scott FRSE,
on her involvement in the RSE's Policy work

"As a genuinely multidisciplinary Academy, RSE is well-placed to draw on the expertise of our outstanding Fellows to contribute substantially to the public discourse around these and other societal challenges."

Professor Zoe Shipton OBE FRSE,
Fellowship Secretary

Inspire



Our work

RSE Awards promote innovation and entrepreneurship and support leading research that benefits Scotland's cultural, economic and social wellbeing. These are divided into two distinct programmes:

The Enterprise Fellowship scheme

Since 1997 the RSE, with the generous support of Scottish Enterprise and UK Research Councils, has run the Enterprise Fellowship programme. This was aimed at assisting academics from across the UK to develop ideas generated by research and development at universities into successful businesses.

The programme has been very successful and has developed a significant number of thriving and high-tech businesses. However, a number of other players have entered productively into this space in recent years and it has proved increasingly difficult to access the required funds. The RSE has decided to pause the programme and consider how the expertise and experience of Fellows, Young Academy of Scotland members and 'graduates' of the Enterprise Fellowship programme can contribute to the crucial area of enterprise development in Scotland.

The last cohorts of the existing programme will finalise their work later in 2022 with further highly important businesses emerging. The RSE continues to give high priority to enterprise development and a key topic for Council during 2022 will be seeking new ways to cost-effectively collaborate with others operating to benefit the Scottish economy.

Research Awards

These support researchers from all academic disciplines; facilitate international and multidisciplinary collaboration; and fund

research making a difference to the real world. Surveys confirm that our awards have significant impact supporting career development, facilitating collaborations, leveraging additional funding and enabling knowledge exchange. In May 2021 the new RSE Research Awards Programme was launched, attracted 299 applications and made 75 awards. These applications included representation from all 15 Scottish universities. 2021 also saw the successful delivery of the RSE Saltire Research Awards in collaboration with the Scottish Funding Council and the Scottish Government, strengthening Scotland's research connections with Europe. 93 awards were made linking 21 European countries with Scotland.

How Fellows can get involved

Short-term opportunities:

- Use academic and business contacts to promote the Research Awards and Enterprise Fellowships
- Suggest how RSE can continue to contribute productively and cost-effectively to the benefit of the Scottish economy and add value by collaborating with others

Longer-term engagement may include:

- Volunteering to serve on our selection committees
- Making nominations for RSE Medals, which include public engagement medals, early career and senior medals and the royal medals (the RSE's highest accolade).
- Seek means of mentoring academics developing plans for new businesses and providing professional and business development advice to budding entrepreneurs.

Supporting researchers in Scotland and beyond

The support of Fellows is invaluable in identifying Research Awards recipients and facilitating awards delivery.

In 2020, Dr Bettina Bildhauser from the University of St Andrews in collaboration with Purdue University was granted an 'Arts and Humanities: Network Grant'. This enabled work on the project 'Ending Period Poverty in Scotland: A Historical and International Perspective'. Dr Bildhauser said "This was the right grant at the right time: without it, members of the Menstruation Research Network would not have been able to devote their attention to Scotland, where so much is happening right now."



[Full case study](#)

A platform for emerging entrepreneurs

Dr Faisal Ghani was awarded an RSE Enterprise Fellowship in Spring 2020 to aid the commercialisation of his exciting business proposition, Solaris Kit.

SolarisKit is a low-cost, flat-packable solar thermal collector, capable of converting sunlight directly into heat in the form of hot water. It has the potential to improve the lives of millions of people in the developing world by providing clean, affordable energy, whilst also reducing carbon emissions. Dr. Ghani said, "The RSE Enterprise Fellowship has been a game-changer for me. Having it meant that I could focus on growing the business."

Mr Nick Kuenssberg OBE, former Chair of the Enterprise Fellowship Selection Committee, commented: "Working with RSE Fellows and external colleagues to award Enterprise Fellowships has been a challenging but rewarding experience. We see a range of seriously innovative businesses developed by impressive undergraduates, postgraduates and academics. Dr Ghani is a great example of our successful awardees but he is not alone and it is a privilege to encourage and advise him and other winners."



[Full case study](#)

Contact details:

Enterprise Fellowships
enterprisefellowships@therse.org.uk
Research Awards
awards@therse.org.uk

Engage



Our work

Bringing together the expertise of our Fellowship, the RSE delivers creative, thought-provoking and high-quality public engagement activities to audiences across Scotland and beyond. Our Public Engagement programme utilises different approaches to engage with the public, including: expert talks; panel discussions; Tea & Talk discussions; family days; blogs; interactive displays, and workshops. Our annual summer programme, Curious, is a highlight of our programme, providing an opportunity to showcase the breadth of knowledge of the RSE and the Young Academy of Scotland to a public audience.

These multi- and cross-disciplinary activities attract a cross-generational audience and take place in the RSE building, at locations across Scotland and, over the last two years, have been successfully delivered online.

We have a young people's programme which includes the delivery of RSE@ Schools Talks for school-aged children (P6–S6) throughout Scotland on subjects ranging from 'Spelling and Sounds' to the 'Physics of Rainbows'.

To help us deliver our programme, we seek input from RSE Fellows and other experts. We also work with a range of partner organisations and collaborators to deliver activities and engage with individuals and communities that may not have had previous opportunity to access platforms that the RSE can provide.

We aim to maximise the impact of our activities and, where appropriate, create outputs such as live illustrations, blogs,

articles for ReSourceE, videos and podcasts. We continually measure and monitor the impact of our programme and use this evidence to inform future work priorities and improve approaches to engagement.

Looking ahead, we will be continuing to focus on embedding equality, diversity and inclusion throughout the programme, ensuring that our activities are as accessible as possible.

How Fellows can get involved

Short-term opportunities:

- Contribute to our Scotland-wide series of Schools Talks which run throughout the school year (currently online but we hope to move back to 'in person' over the coming year)
- Submit an idea for an event or Tea & Talk discussion for Curious 2022, the RSE's summer programme on one of the four themes: 'Our Planet', 'Health & Wellbeing', 'Innovation & Invention' and 'Year of Stories'.
- Provide input and help shape upcoming activities

Longer-term engagement may include:

- Membership of the Public Engagement Advisory Group (meets three times per year)
- Propose ideas for RSE public engagement activities
- Provide input and help shape upcoming activities

Engage (continued)

CASE STUDY

Aspiring to serve communities

As part of my work for RSE, I give regular talks to schools and community groups, both in person and virtually.

I have also assisted RSE in presenting public talks and activities, including involvement in the 'RSE@' programmes and in Curious, the RSE's summer offering. My own special topics are the linguistics of English and Scots, including both literary and non-literary language, and material culture with special reference to book history, drawing on my own areas of research and teaching, and on experiences I have had working with (e.g.) the Dictionary of the Scots Language. The talks on Scots are currently very popular; folk have often said – even though they don't quite put it that way – that having an 'outsider' like myself come and talk about their own language as something worth studying is an empowering experience for them.

I've spoken all over Scotland, from Banff in the north to Kirkcudbright and Eyemouth in the south, and throughout the central belt, from Airdrie to Kirkcaldy. I've run classes with douce groups in Edinburgh, and for children with pretty tough lives in Castlemilk.

A highlight was when 'RSE@' was based in Lochaber a few years ago; I spoke to primary schools across the area, including a charming group of ten – the whole of the school roll – in Kilchoan at the end of the Ardnamurchan peninsula, followed by an address on 'language and landscape' to what turned out to be almost the entire local population.

So I've got to see a lot of Scotland and its diverse communities, which has been wonderful. But I've also had the chance to build a few bridges between the 'ivory tower' of universities – as they are sometimes still seen, I fear – and Scottish schools where too often higher education is still not seen as 'something for us'. And I have also learned a huge amount from the teachers and community groups I've worked with. An extra pleasure is being asked back, and thus strengthening the connections between RSE and the communities it aspires to serve. In sum, engaging with the public about their expectations of academia is hugely rewarding and a wonderful way of communicating the value of research, and developing its societal impact.

Professor Jeremy Smith FRSE

Senior Research Fellow, English Language & Linguistics, University of Glasgow and RSE Young People's Programme Convener

Contact details:

public_engagement@therse.org.uk

Provide expertise



Our work

We contribute proactively to national discussions around contemporary and emerging issues. Using the RSE's convening power, we organise roundtables and discussions, bringing together a range of perspectives on a particular topic. We look to work in partnership with others where it is appropriate to do so.

We regularly respond to consultations and calls for evidence from various bodies at both Scottish and UK levels. This involves assembling a broad-based working group of Fellows to discuss the issues and inform the development of an advice paper. We engage directly with parliamentary committees and submit debate briefings to members of parliament.

From time-to-time we undertake in-depth and longer-term inquiries into issues of contemporary importance to Scotland.

There are also standing committees on education and economy and enterprise which have more specialised remits.

How Fellows can get involved

Short-term opportunities:

- Contribute to advice papers and other working groups
- Provide oral evidence to parliamentary committees when invited
- Participate in policy-related discussions and events
- Identify new or evolving issues and topics to which the RSE could add value through expert advice.

Longer-term engagement may include:

- Contribute to inquiries and longer term areas of work
- Expand and strengthen the RSE's relationships with academia, business, and other sectors
- Join a standing RSE committee.

Provide expertise (continued)

CASE STUDY

Diversity of opportunity

“I have been involved in a number of different policy areas with the RSE.”

“My involvement has included: participating in working groups drafting position papers as we left the EU; chairing a small group of Fellows as we developed a response to a Scottish Government consultation on artificial intelligence; being a panellist at an RSE event at a political party conference; and recording a short video about climate change.”

“As Fellows of the RSE we have opportunities to make a difference, by making our knowledge useful. Given the expertise of its Fellowship, the RSE has a rich resource to draw from when contributing to,

leading and shaping our society; and this is something we can all play a part in.”

“I found all the activities I have been involved in to be stimulating. They were also very enjoyable and a chance to meet new people. All the activities were very well supported by the RSE policy staff, they answered our questions, guided us as we navigated some of the intricacies of engagement, and also improved our final texts.”

“I would thoroughly recommend the experience, so do volunteer and become involved.”

Professor Marian Scott FRSE

Professor of Environmental Statistics, University of Glasgow

Contact details:

publicpolicy@therse.org.uk

Promote



Our work

RSE International activity plays a vital role in facilitating and supporting international collaborations between Scotland and other countries. Through the RSE strategic partnerships with prominent academies around the world and working with our Fellows (including our Corresponding Fellows), we are able to raise awareness overseas of the world-class research and innovation being undertaken in Scotland.

We have been working hard to redevelop some of our core activity both at the RSE and globally with partners during the Covid-19 pandemic. Development work continues with our Africa Working Group as the RSE partners with the African Academy of Sciences whilst supporting activity with China, Germany, Italy, Taiwan and various international networks. The RSE, at any one time, has a global footprint across 21 countries through its various activities or funding and we deliver on our aims through:

- Building links and strategic partnerships with academies and learned societies across the world
- Facilitating and participating in joint workshops and projects with partners overseas
- Funding an international exchange programme and enabling international collaborations
- Harnessing the knowledge and international networks of our Fellows both in Scotland and overseas.

How Fellows can get involved

Short-term opportunities:

- International workshop lead or speaker
- International themed roundtable participant
- International Committee member
- All European Academies (ALLEA) working group participation

Longer-term engagement may include:

- Applying for funding to support international collaboration through workshops, networks and joint projects
- Hosting incoming delegation visits
- RSE advisor on the UK Academies Human Rights Committee (UKHRC)

Action on Human Rights Abuses

In 1993 a group of Nobel laureates, including Max Perutz, FRS, established the International Human Rights Network of Academies and Scholarly Societies (IHRN).

Its purpose is to alert national academies to human rights abuses involving fellow scientists and scholars. More than 90 academies world-wide have taken part. IHRN, based in Washington DC, issues action alerts in cases of abuse. The national academies then decide what action, if any, they will take.

In Britain and Ireland, eight Academies and Learned Societies are part of the UK Academies Human Rights Committee (UKHRC): the RSE together with the Young Academy of Scotland (YAS); the Royal Society; the British Academy; the Learned Society of Wales; the Royal Irish Academy; the Royal Academy of Engineering; and the Academy of Medical Sciences. The secretariat is undertaken by the Academies in turn.

When an Action Alert is received from IHRN, the Academies consider whether action should be taken or whether further information should be sought from IHRN. The criterion for taking action is whether victims have suffered abuse because of their scientific or scholarly work.

The action taken will normally be a letter of protest addressed to the head of state and the ambassador of the country concerned. In some cases, this has contributed to putting an end to the abuse. Even if it does not, victims do derive reassurance and comfort from the knowledge that their professional colleagues have taken action on their behalf.

Action alerts are considered initially by a small committee of the RSE, including a member of YAS. If it appears that the case does not meet the criterion for taking action, and this view is shared by the other Academies, nothing further will be done. Where it is agreed that action should be taken, the national secretariat will draft the joint letter or make further enquiries as appropriate. Deference is given to the view of the Academy most obviously concerned - e.g. the Academy of Engineering in the case of an engineer.

Apart from dealing with action alerts, a committee of the British and Irish Academies now meets regularly to discuss the growing problem of human rights abuses and what we should be doing to deal with them.

Professor Sir David Edward KCMG FRSE

Former Judge of the Court of Justice of the European Communities
and RSE Advisor on UKHRC

Contact details:

Alan Salonika,
International Relations and Research Awards Manager
asalonika@therse.org.uk

Young Academy of Scotland

The RSE Young Academy of Scotland (YAS) brings together young professionals from all sectors to work together on projects that benefit Scotland and the world. By sharing its members' expertise and research, YAS investigates pressing social issues, informs public debate, amplifies marginalised voices, and drives transformational change.

YAS was set up by the RSE in 2011, as part of an international movement which is seeing National Academies worldwide setting up Young Academies, to engage a younger generation of researchers and professionals in their public benefit work.

YAS has around 140 members, who range in age from mid twenties to early forties. Members are selected by application and remain for a period of five years.

Our work

YAS delivers member-led projects, around six core societal themes and five grand challenges, which are set out in its strategic plan.

Current projects include:

- Creating a teaching and learning resource for secondary school students on our Charter for Responsible debate
- Coastal Knowledge' - an interactive, online exhibition highlighting communities on the coast of Scotland
- 'A Radical Response to Structural Problems' - a new project which intends to disrupt current thinking about equality, diversity and inclusion within member organisations.



How Fellows can get involved

Short-term opportunities:

- Join the mailing list for the quarterly YAS public newsletter. This provides an update on YAS activities and ways to engage with YAS
- Volunteer to act as a mentor for a YAS member (all members are offered the opportunity for mentoring, if they wish it).

Longer-term engagement may include:

- Membership of YAS advisory board
- Engage with specific YAS projects as these develop
- Act as a reviewer for YAS membership applications (the next recruitment round will open in January 2024).



Fellows and YAS working together

Fellows have been involved in supporting the development of YAS since it was established in 2011. As members of the RSE Scotland SCIO (the predecessor to the YAS Advisory Group) Fellows have advised YAS on its direction, focus, priorities and financial position, and their guidance has helped YAS to grow and to increase its impact. Fellows also act as mentors to our YAS members, and this has been incredibly valuable to members, and rewarding to Fellows.

We are now seeing YAS members and alumni being elected to the Fellowship of the RSE, which shows the excellence within the YAS membership, and further strengthens the connections between YAS and the RSE.

Contact details: Marie Montondo, YAS Officer mmontondo@therse.org.uk

Other information

If you have any further questions, please contact the Fellowship team: fellowship@theRSE.org.uk.



ASM and Ordinary Meetings

The Annual Statutory Meeting normally takes place on the last Monday of October each year. All Fellows are encouraged to attend this meeting to hear about the work of the RSE in the preceding year, discuss plans for the future, and approve any governance or laws changes.

In addition, Ordinary Meetings are held throughout the year. These provide an opportunity to bring Fellows together to discuss topics of interest and Fellows are welcome to suggest topics and/or speakers. As far as possible, Ordinary Meetings will be timed to closely follow Council meetings, so an update can be provided to Fellows. These meetings will also be used to announce Society Business, as required by the laws.

Other Fellow events

A variety of events for Fellows run throughout the year including regular coffee and discussion meetings, Fellow receptions and regional events. We are always keen to hear from Fellows interested in participating in RSE activities and from any Fellows with ideas for Fellow events whether in person, virtual or blended.

Funding

The RSE offer grants specifically for Fellows to support their academic activities. These include: funding to support meetings; travel assistance; visitors to Scotland; support for publications; and university/industry liaison. For more information [please visit the RSE website](#) or contact the Awards team: awards@therse.org.uk.

Nominations

New Fellow nominations can be submitted using our online forms from with a closing

date of 31 May each year. The assessment process is then carried out from July until the end of November and the final list of candidates approved by the RSE Council in December. Proposed new Fellows are then put to a ballot of the Fellowship. Successful candidates will be informed in the Spring.

All Fellows are welcome to get involved in this process, acting as nominators or assessors. Fellows are also encouraged to get in touch with the Fellowship team if they would like to assist with proactively seeking diverse new candidates as part of our nominations groups or as a sectional committee member reviewing nominations.

Communication

We keep the Fellowship updated on the activities and opportunities through our monthly Fellows bulletins, the *ReSource* magazine and direct communication from different departments about upcoming projects.

Fellows Room

Fellows are welcome to use the Fellows Room in the RSE building (situated off the Reception Hall) at any time the building is open (normally Monday–Friday, 8.30 am –5.00 pm). The room has tea and coffee facilities, daily newspapers and Wi-Fi, so is suitable for working, relaxing and informal discussions. For more formal meetings, Fellows are asked to contact the Fellowship Team or Venue Team about alternative spaces. This room is also made available to YAS members.

Venue discount

Rooms within the RSE can be hired for conferences, dinners, meetings, receptions, seminars and celebratory occasions, and Fellows who do so are entitled to a 25% room hire discount. For more information, [please visit our website](#) or contact the Venue team: rooms@therse.org.uk.

Policies

Fellows are asked to familiarise themselves with the RSE's policies, which include an anti-bribery policy, whistleblowing policy, and our procedure for responding to complaints and allegations of misconduct. The policies can be [found on our website](#) and regular reminders will also be included in the Fellows Bulletin.

Honorary Fellow



LENNOX Annie

Singer, Songwriter and Activist

Celebrated and named as one of the 100 Greatest Singers of All Time by Rolling Stone Magazine, Annie Lennox's iconic musical career spans over four decades, going back to the early 80's when the internationally renowned 'Eurythmics' was formed in collaboration with Dave Stewart.

In the early 90's she went on to establish an acclaimed solo career.

Over the years she has won eight Brit Awards, including Best British Female Artist six times - four Ivor Novello Awards and 26 ASCAPs.

In the US she has been awarded four Grammy Awards, with fifteen nominations and three MTV Awards.

She was awarded both a Golden Globe and an Academy Award, as well as a Billboard Century Award; the highest accolade from Billboard magazine.

Having sold over 83 million albums worldwide, she is the first woman to be recognised with an ASCAP Fellowship.

Over the years, she has worked on behalf of countless organisations, including Oxfam, Amnesty International, Greenpeace, The British Red Cross and Comic Relief.

Working with UNAIDS as a Goodwill Ambassador, she became well known for her work as a tireless HIV/AIDS activist and advocate.

She has been a Special Envoy for the Scottish Parliament and the City of London, receiving the Woman of Peace Award at the 2009 World Summit of Nobel Peace Laureates. In 2011 she was named an Officer of the Order of the British Empire (OBE) in recognition of her humanitarian work.

She is a Royal Academician and the first female Chancellor of Glasgow Caledonian University in her native Scotland, where she was also honoured with the prestigious Livingstone Medal in 2016. Her work in the visual arts includes an exhibition launched at the Victoria and Albert Museum, London; 'The House of Annie Lennox' – and through the UK and in 2019 - a conceptual installation at MASS MoCA, entitled "Now I Let You Go..." in USA.

Annie Lennox is the original founder of The Circle : A non - profit organisation of women working together to achieve equality for women and girls in a fairer world.

Corresponding Fellows



CASAS Jérôme

Professor of Ecology,
University of Tours

Jérôme is specialized in the physical ecology of insects and in bio-inspired microtechnology. He graduated from ETH Zurich, had positions at the ETH, the University of California in Santa Barbara, and the university of Tours. He was awarded a Humboldt research award, was nominated at the Institut Universitaire de France and was the 2006 Distinguished Invited Professor of the Center for Insect Science in Tucson. Prof. Casas also served on several editorial boards, currently as editor in chief of Current Opinion in Insect Science. His post-doc at Strathclyde had a lasting impact on his career and he is currently Honorary Professor at Heriot-Watt University.



CHIRIKURE Chirikure

Director, International Literature Festival,
Harare

Chirikure Chirikure is a writer who has published several books ranging from poetry collections, children's stories, to educational materials. He is also a performance poet who performs solo and/or with musical accompaniment. He has recorded a number of poetry CDs and videos. He is also a lyricist, as well as a stage and film actor. He is a professional publisher/editor, and an English/Shona translator. He also does mentorship and training work for younger creatives.



CONSTABLE Edwin

Professor of Chemistry,
University of Basel

Ed Constable was born in Edinburgh and began his chemical career at the Universities of Oxford and Cambridge before moving to a Chair at the University of Basel. He was a pioneer in metallosupramolecular chemistry and understanding how metal-ligand interactions could be translated into algorithms for the construction of beautiful chemical assemblies. These ideas underlie his current efforts in developing a sustainable materials chemistry, with a special emphasis upon solar energy and photonic devices. He is a passionate communicator of science and scientific integrity. When not being a chemist, he can be found chasing insects and pursuing his love of macro-photography.



MAZUMDAR-SHAW Kiran

Executive Chairperson and Founder,
Biocon Limited

Kiran Mazumdar-Shaw is a pioneering biotech entrepreneur, a healthcare visionary, a global influencer, and a passionate philanthropist. The impact she has made as a leading woman in science has made her a role model globally. She is committed to equitable access to healthcare through affordable innovation as she pursues a path of making a difference to billions of lives globally. During Covid she has been championing the cause of the healthcare industry in finding innovative solutions to combat the pandemic.

Fellows



ALIOTTA Marialuisa

Professor of Experimental Nuclear Astrophysics,
University of Edinburgh

Marialuisa Aliotta is Professor of Experimental Nuclear Astrophysics and Head of the Nuclear Physics group at the University of Edinburgh. Her research interests focus on the experimental study of nuclear reactions that take place in stars and contribute to the creation of the chemical elements in the Universe. For her work at the underground LUNA laboratory (Italy), Marialuisa was awarded the 2021 Occhialini Medal and Prize, conferred

jointly by the IoP and the Società Italiana di Fisica. Marialuisa also coaches and consults on various aspects of academic life, including on public speaking, writing, and publishing, through mentoring programs, workshops and online courses (academiclife.coachesconsole.com).



BAILLIE Kenneth

Professor of Experimental Medicine,
University of Edinburgh

Kenneth Baillie is Professor of Experimental Medicine at the University of Edinburgh. He works as a consultant in the intensive care unit at the Royal Infirmary, and leads a research lab focused on translating clues from genomics into new treatments for critical illness such as sepsis, Covid-19 and influenza. During the Covid outbreak in 2020-21, he led the UK-wide GenOMICC and ISARIC-4C studies, and contributed to the design and delivery of the

RECOVERY and RECOVERY-RS trials. He discovered new biological mechanisms underlying critical illness in Covid, and contributed to the discovery of the first effective treatments.



BARBER Jude

Architect-Director,
Collective Architecture

Jude Barber is an architect and director at Collective Architecture. The 100% employee-owned studio has created key residential, cultural strategic projects around the UK. In parallel with studio practice, Jude co-created The Empire Café with writer Louise Welsh and Voices of Experience with Suzanne Ewing and Nicola McLachlan. She is a Board member of the Glasgow Women's Library, a visiting tutor at the

University of Sheffield and Council member at the Royal Incorporation of Architects in Scotland. In 2018, Jude was named 'Creative Industry Leader' at the Scottish Women's Awards and shortlisted for the 2020 Building Design 'Architectural Leader of the Year'.

Fellows



BARR Damian
Writer & Broadcaster

Damian Barr is a writer, broadcaster and journalist. His memoir, *Maggie & Me*, was Sunday Times Memoir of the Year. His debut novel, *You Will Be Safe Here*, was shortlisted for six awards, including the Saltire. He has written columns for *The Times* and *Sunday Times* and hosted *Front Row* on Radio 4. Damian brought books back to television with the Big Scottish Book Club on BBC Scotland and presented the landmark documentary marking Sir Walter Scott's 250th anniversary. He wants to

widen participation in reading and writing making the case for bookshops and libraries for all.



BAYER Arend
Professor of Algebraic Geometry,
School of Mathematics, University of Edinburgh

Professor Arend Bayer works in algebraic geometry, the area of mathematics studying shapes and configurations arising from polynomial equations. In his work, he established new algebraic concepts inspired by string theory in particle physics as standard tools to study and answer fundamental geometric questions. Since moving to the University in Edinburgh in 2012, he has mentored almost 20 graduate students and post-docs.



BERTO Francesco
Professor of Logic and Metaphysics,
University of St Andrews

Franz Berto was born in Venice, Italy. He holds the Chair of Logic and Metaphysics at the University of St Andrews and also works at the Institute for Logic, Language and Computation (ILLC) of the University of Amsterdam. His research is in logic (non-classical logic, the logic of knowledge and of suppositional thinking), ontology, and its methodology. He has published numerous papers on these

subjects, and monographs including *How to Sell a Contradiction* (2007), *Existence as a Real Property* (2013), *Ontology and Metaontology* (2015), *Impossible Worlds* (2019) and *Topics of Thought* (2022). He is the editor-in-chief of *The Philosophical Quarterly*.



CANEVARO Mirko
Professor of Greek History,
University of Edinburgh

Mirko Canevaro is a leading Greek historian with particular interests in the institutional and social history of ancient Athens and of the Greek city-states. He has published extensively on Athens' legal and political institutions, on Greek political decision making and constitutionalism, on conceptions of honour, rights and recognition, and on ancient political theory (Aristotle in particular). His research has

been funded by Humboldt Foundation, AHRC, Leverhulme Trust, ERC, as well as receiving prestigious awards: Philip Leverhulme Prize; University of Edinburgh Chancellor's Rising Star Award; RSE Thomas Reid Medal. He was elected in 2019 to the *Accademia Europaea*.

Fellows



CHAN Stella

Charlie Waller Chair (Professor) in Evidence-based Psychological Treatment, University of Reading

As a clinical psychologist, Stella's research focuses on young people's mental health, seeking to identify factors that can help understand, prevent, treat and support children and adolescents with depression and anxiety. She founded Project Soothe (www.projectsoothe.com) and has been at the forefront of promoting the use of citizen science methodology to empower young people as co-producers of health research and innovations. She

was winner of the British Psychological Society's Public Engagement and Media Award. Since relocating to the University of Reading, she has been working closely with charities including the Charlie Waller Trust to advance evidence-based psychological interventions in community.



DAHIYA Ravinder

Professor of Electronics and Nanoengineering and EPSRC Research Fellow, University of Glasgow

Professor Ravinder Dahiya is a distinguished academic known for his distinctive contributions to the field of electronic skin, mechanisms underlying tactile sensing and large area energy generating skin. His research on tactile sensing has immensely benefitted the fields of robotics, prosthetics and wearable systems. He has also made several important advancements in flexible electronics by

pioneering new directions such as high-performance electronics through resource efficient printing technologies and sustainable materials. He is the President of IEEE Sensors Council and Fellow of IEEE, which reflect his internationally renowned achievements.



DAVIES Jamie

Professor of Experimental Anatomy, University of Edinburgh

Jamie Davies is interested in the basic science of how organs and tissues develop during embryonic and foetal life. He is also interested in how we can apply what we learn about natural development to engineer replacement organs for clinical use, and to design entirely novel tissues by the techniques of synthetic biology. His lab also runs the main drug development database for IUPHAR (International Union of Basic and Clinical Pharmacology).

Fellows



DELIBEGOVIC Mirela

Dean for Industrial Engagement in Research
& Knowledge Transfer, University of Aberdeen

Professor Mirela Delibegovic is the Chair in Diabetic Medicine and Director of Aberdeen Cardiovascular and Diabetes Centre. In 2019, she was appointed Dean of Research (Industrial Engagement and Knowledge Transfer) at the University of Aberdeen. Professor Delibegovic is a world-leading scientist in diabetes and cardiovascular disease, as evidenced by her top-ranking publications, extensive research portfolio, academic standing and international reputation. She is the chair/co-chair on several grant funding committees and international keynote speaker. In addition, she is a champion and mentor for women scientists and early career researchers, and winner of public engagement awards.



DONALDSON Cam

Yunus Chair and Distinguished Professor of Health
Economics, Glasgow Caledonian University

Renowned for developing methods for economic appraisal of health interventions and founding GCU's world-leading Yunus Centre for Social Business & Health, Cam also served as Pro Vice Chancellor Research (2016-21) when GCU became the first university to base its research strategy on the Sustainable Development Goals. Previously Health Foundation Chair at Newcastle University, Svare Chair at University of Calgary and Professor at Aberdeen University, Cam's work has been recognised through a Public Services Fellowship funded by the Economic & Social Research Council and senior investigatorships from the Canadian Institutes of Health Research and the National Institute for Health Research.



DORRIAN Lady Leeona

Lord Justice Clerk,
Court of Session

Lady Dorrian was installed as Lord Justice Clerk and President of the Second Division of the Court of Session in April 2016. As such she is Chair of the Scottish Sentencing Council. She was appointed a Judge of the Supreme Courts in 2005, having served as a Temporary Judge since 2002, and to the Inner House in November 2012. Lady Dorrian was Standing Junior Counsel to the Health and Safety Executive and Commission between 1987 and 1994, served as Advocate Depute between 1988 and 1991, and as Standing Junior to the Department of Energy between 1991 and 1994. Lady Dorrian was appointed Queen's Counsel in 1994. Between 1997 and 2001 she was a member of the Criminal Injuries Compensation Board.

Fellows



DRISCOLL Stephen

Professor of Historical Archaeology,
University of Glasgow

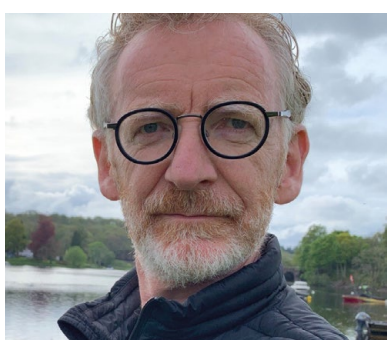
Stephen T. Driscoll is the Professor of Historical Archaeology at the University of Glasgow. His research interests focus on the early medieval Celtic Scotland (AD 400-1100), particularly on the Pictish and northern British societies. In practice, excavating at such long-lived sites as Edinburgh Castle, Glasgow Cathedral, Forteviot and Govan Old has drawn him to explore archaeological remains stretching from the contemporary world to prehistory. Through his applied archaeology experience he developed an interest in critical cultural resource management - he was instrumental in developing Scotland's Archaeology Strategy – and is committed to ensuring that his work contributes social benefits, especially community regeneration.



DUNCAN Rory

Director of Talent and Skills,
UK Research and Innovation (UKRI)

In his role at UKRI, Professor Rory Duncan works across the research system and government with responsibility for strategy, policy, actions and funding delivery. He is co-Director of the Edinburgh super-resolution imaging consortium, a shared endeavour between Heriot-Watt and Edinburgh Universities providing training and technology for researchers using advanced microscopy. He was founding head of a multi-disciplinary research institute at Heriot-Watt and holds a Royal Society of Edinburgh Senior Medal for public engagement. His research interests are in the molecular mechanisms of secretion. From April 2022, he will be Pro Vice-Chancellor at Sheffield Hallam University.



FARMER Lindsay

Professor of Law,
University of Glasgow

Lindsay Farmer's main area of interest is the history and theory of criminal law, combining historical analysis of the development of legal institutions and doctrines with normative theory. His first book, *Criminal Law, Tradition and Legal Order* (1997) argued that the development of Scots criminal law was shaped by form of legal nationalism that defended the belief in a distinctive 'genius' or spirit of Scots law. His second book, *Making the Modern Criminal Law*, (2016) showed how criminal law was developed as a distinctive doctrinal field of law. His current research is on the relation between markets and the criminal law.

Fellows



FARRINGTON Sinead

Professor of Experimental Particle Physics,
University of Edinburgh

Sinead Farrington is an experimental particle physicist with interests across collider physics as a means of understanding the most fundamental particles and their interactions. Sinead currently leads the UK effort in the ATLAS collaboration at the LHC at CERN. She led ATLAS searches for the Higgs boson decaying to tau leptons and now searches for exotic particles. Sinead collaborated in discoveries

in the CDF collaboration at Fermilab, USA. She serves on STFC's Project Peer Review Panel and the European Committee on Future Accelerators. She was awarded the 2021 Physical Sciences Laureateship, Blavatnik UK New York Academy of Sciences prize.



FOWLE Frances

Personal Chair of Nineteenth-Century Art,
University of Edinburgh

Frances Fowle is an art historian and curator, specialising in French and Scottish art. She is an authority on collecting and the early market for Impressionism, with a current focus on women as tastemakers. She has curated numerous international exhibitions and her publications include *Impressionism and Scotland* (2008), *Van Gogh's Twin* (2010) and a co-edited anthology, *Globalising Impressionism: Reception,*

Translation and Transnationalism (2020). She is Chair of Nineteenth-Century Art at the University of Edinburgh, Senior Curator of French Art at the National Galleries of Scotland, Chair of the Association for Art History and Senior Trustee of the Burrell Collection.



FYFE Aileen

Professor of Modern History,
University of St Andrews

Professor Aileen Fyfe is a historian of science, technology and publishing, with particular interests in the construction and communication of knowledge, and the way in which scholarly communities operate. Her recent work investigated the history of academic publishing from the seventeenth century to the present day, including the financial models underpinning scientific journals, and their editorial and reviewing processes. She has also written

about nineteenth-century popular science publishing, studying organisations as varied as the Religious Tract Society and the Edinburgh publishers W. & R. Chambers. She is currently writing about the ways in which information was gathered, organised and shared in Victorian Britain.

Fellows



GALBRAITH Colin

Chairman,
Joint Nature Conservation Committee

Professor Galbraith is Chair of the UK Joint Nature Conservation Committee, advising governments on nature conservation at the UK and international levels. He has been instrumental in leading innovative approaches to the identification and management of protected areas for nature, and on wildlife conservation across the UK. His work includes advising the United Nations on topics of current

concern including zoonoses transmission; the interactions between climate change and biodiversity losses, involving complex cultural, economic, ecological and risk management decisions. He has led the development of transformational formal global inter-governmental Agreements on the conservation of migratory species, and on climate change.



GERARDOT Brian

Professor of Physics and RAEng Chair in
Emerging Technology, Heriot-Watt University

Professor Brian Gerardot holds a Chair in Emerging Technology from the Royal Academy of Engineering and leads the Quantum Photonics Lab at Heriot-Watt University in Edinburgh, Scotland (<http://qpl.eps.hw.ac.uk/>). His research, at the interface of quantum optics, condensed-matter physics, and materials science, aims to engineer and controllably manipulate quantum states in semiconductor devices, in particular

with III-V quantum dots and van der Waals heterostructure devices. Brian obtained a BS from Purdue University and a PhD in Materials Science from UC Santa Barbara.



GILLESPIE Neil OBE

Chairman and Design Director,
Reiach and Hall Architects

Neil Gillespie is a practising architect, academic and a Director of Reiach and Hall Architects. Recent works include The Pier Arts Centre Stromness, Glasgow City College, Maggie's Airdie and the Caithness and National Nuclear Archive in Wick. Neil mirrors practice with teaching design studio as a visiting professor at the Scott Sutherlands School of Architecture, Robert Gordon University Aberdeen

and Sheffield University. He is a member of the RIBA Awards Committee. Neil's interests lie in art and architecture collaborations and conversations. He instigated with artist Alan Johnston sleeper gallery, within the offices of Reiach and Hall, as a vehicle to explore the slim interface between art and architecture always with an eye on the north.

Fellows



GREK Sotiria

Professor of European and Global Education Governance,
University of Edinburgh

Professor Sotiria Grek researches the role and impact of quantification on transnational governance. She has particular expertise in performance monitoring and evaluation in the fields of education and sustainability, with a specific focus on the Sustainable Development Goals (SDGs). Her research places numbers and comparison in the foreground of enquiry into the making of

global public policy, rather than examine them as merely offering 'evidence' to policy making. Further, she focuses on an analysis of global education policy convergence through an examination of the interdependencies of large international organisations and the mediating effects of national and local policies and practices.



HARRIS Harriet MBE

University Chaplain and Head of the Chaplaincy Service,
University of Edinburgh

Revd Dr Harriet Harris is a theologian, writer, Head of Chaplaincy at the University of Edinburgh, and Convenor of the Doctrine Committee of the Scottish Episcopal Church. She is a Co-Director of the Edinburgh University Global Compassion Initiative, and delivers compassion training for NHS Scotland, universities, and Scottish Government. She is a coach and in-house trainer with One of Many, the

UK's largest network organisation for women leaders. Harriet hosts three podcast series: 'Let's Talk', on mental health; 'Being at University', promoting inclusivity and diversity; and 'The Chaplaincy of Joyful Abandon', bringing paradox to matters of social importance.



HART Emma

Professor of Computational Intelligence,
Edinburgh Napier University

Emma Hart is a Professor in Artificial Intelligence in the School of Computing at Edinburgh Napier University. Her interests lie in developing automated systems inspired by processes observed in nature, to endow machines with the capability not only to autonomously solve problems but to also improve their problem-solving capabilities over time. Her work has found a broad range of application in academia

and industry, ranging from optimising the layout of infrastructure (e.g. in water networks) to designing and controlling robots. She has a keen interest in public engagement, regularly contributing articles to the popular press and participating in events.

Fellows



HASTIE Helen

Professor of Computer Science,
Heriot-Watt University

Helen Hastie is a Professor of Computer Science at Heriot-Watt University, specialising in human-robot interaction, spoken dialogue and trustworthy autonomous systems. She has brought her international industry experience to academia in Scotland, leading translational initiatives, such as the UKRI Node on Trust, and EPSRC Prosperity Partnership, as well as being the academic co-lead for the new National Robotarium. Fundamental

to the growth of robotics is the next generation of roboticists, and Prof. Hastie is the director of the Centre for Doctoral Training in Robotics and Autonomous Systems at the Edinburgh Centre for Robotics, which is award-winning for its work on encouraging gender diversity in robotics.



HEYCOCK Caroline

Professor of Syntax,
University of Edinburgh

Professor Caroline Heycock did her PhD in linguistics at the University of Pennsylvania and worked at a number of universities in the USA before joining the University of Edinburgh in 1994; she became a professor in 2007. Her principal research interests are in the field of syntax, where her research has typically been focussed on questions relating to the interfaces of syntax with semantics and - in more recent work - morphology. She

has drawn her data from a number of different languages. In her early work she published on Japanese; latterly her focus has been on Germanic, where she has a particular interest in variation and change in Faroese, one of the two "insular Scandinavian" languages.



HOLDEN Matthew

Professor of Pathogen Genomics,
University of St Andrews

Matthew Holden is Professor of Pathogen Genomics at the University of St Andrews. Over the last two decades his work has focused on using whole genome sequencing as a research tool to investigate the evolution of pathogens and their ability to cause disease, and also as a clinical tool to identify outbreaks and trace the spread of infectious diseases. Since the start of the COVID-19 pandemic, he has been seconded into Public

Health Scotland and applied his expertise to help build a SARS-CoV-2 sequencing service in the NHS and integrate the genome data generated into the public health response.

Fellows



HOLDSWORTH Robert

Professor of Structural Geology, Durham University
and Chair of the Scottish Geology Trust

Bob Holdsworth is Professor of Structural Geology at Durham University. His research - a substantial proportion of which has utilised world-class Scottish geology - is concerned with understanding the geological architecture, deformation processes and fluid transport properties of fault zones by integrating the results of fieldwork, microstructural analysis and rock deformation experiments. He has pioneered studies

of fractured crystalline rocks and the role played by pre-existing structures in controlling crustal deformation patterns. Bob is also a member of the Office of Nuclear Regulation (ONR) Expert Panel in Seismic Hazard and is a Trustee of the Scottish Geology Trust.



HOU Wenxuan

Professor and Chair in Corporate Finance,
University of Edinburgh

Professor Wenxuan Hou is Chair in Corporate Finance at the University of Edinburgh Business School. He serves as a joint-editor of the British Accounting Review and was elected as a Member of the Academia Europaea (MAE). His research covers cultural and institutional determinants of investor protection and financial development.



IMRAN Muhammad Ali

Dean of Transnational Engineering Programme,
University of Glasgow

Professor Imran is an international leader in the field of communication systems. His pioneering work, particularly in the areas of self-organized cellular networks and energy-efficient communications, is widely cited, incorporated into standards, and adopted commercially. By steering one of the most successful UK-China transnational education initiatives, he is an international ambassador for Scottish Higher Education

sector. He is passionate about sharing the benefits of technology equitably across society and is a strong supporter and mentor for young Scottish talent. As a Fellow, he will bring his organisational skills and network to accelerate these aspects of the RSE's mission.

Fellows



JAMESON Carolyn

Chief Trust Officer,
Trustpilot

Carolyn's varied career has involved holding executive leadership roles covering corporate development, legal, policy and communication, within the technology sphere. She has held a number of Non-Executive roles within public organisations such as the Scottish National Investment Bank, and in technology start-ups. Carolyn has a particular interest in emerging international regulatory policy

in an online environment, given her experience scaling fast growth online businesses such as Skyscanner and Trustpilot. She is also an active participant in the investment community. Carolyn qualified as a barrister, subsequently developing expertise as an in-house solicitor, and also holds an LLM in Intellectual Property from Edinburgh University.



JORDAN Siobhán

Head of Technology Transfer and Commercialisation,
Teagasc

Siobhán founded the Interface programme in 2005, implementing the vision of a central point of access for matching business challenges to world-leading research in Scottish Universities and Colleges. She established herself as a research leader in cellular biology and pigmentation before embarking on a career in enterprise, innovation, and knowledge exchange. Her particular areas of expertise are in

the development and management of impactful programmes enhancing innovation in industry, the commercialisation of academic research, leadership and strategic development for policy and practice. She is also passionate about supporting emerging leaders in an ever-changing world and is a visiting facilitator at The Leadership Trust.



KERR Andy

Director, UK & Ireland,
EIT Climate-KIC

Andy Kerr is a leader in catalysing innovation in climate policy and practice. He mobilizes and connects resources, insights and capabilities to enable cities and regions, investors, and entrepreneurs to deliver their ambitious climate targets. Having co-founded and directed the Edinburgh Centre for Carbon Innovation and the Scottish Centre of Expertise on Climate (ClimateXChange), he now leads EIT Climate-KIC – Europe's largest public-

private climate innovation partnership – in UK and Ireland and EIT's Global Outreach in Silicon Valley and Israel. He is an Honorary Professor at the University of Edinburgh, having previously been appointed as Personal Chair of Climate and Low Carbon Innovation.

Fellows



KIRKPATRICK Janice OBE

Director,
Graven

Janice Kirkpatrick is a Designer, company Director and co-founder of design studio Graven where she leads projects for clients in many industry sectors in the UK and abroad. She unlocks the economic value of ideas, culture, places and people—by building brands and circular economies that reduce waste, and wasted talent. She is interested in applying advanced manufacturing to evolve craft skills, and

exploring how heritage assets can be reframed to deliver opportunities for economic development. She is passionate about rare breeds, especially the Clydesdale horses that she breeds and trains. She also keeps bees and tries to be a gardener.



LEICESTER Graham

Director,
International Futures Forum

Graham Leicester is Director of International Futures Forum, an organisation he helped to establish in Scotland in 2001 to restore the capacity for effective and responsible action in a complex world. IFF now sits at the heart of a wide international network of persons “making a difference in the face of all that stands in the way of making a difference”, mostly in the public, government, social and

community sectors. Graham's interests include education - developing 21st century competencies; governance - organising for legitimacy, integrity and future-conscious action; and transformative innovation – otherwise known as practical hope.



LIDDLE Stephen

Professor of Inorganic Chemistry,
University of Manchester

Professor Steve Liddle is Head of Inorganic Chemistry and Co-Director of the Centre for Radiochemistry Research at the University of Manchester. He is a physical-inorganic chemist, and an expert in the chemistry of the f-elements, that is the lanthanides and actinides. His research involves exploratory synthetic chemistry coupled to detailed electronic structure and reactivity studies to elucidate structure-bonding-property

relationships. His work has been recognised with various awards, including the Tilden Prize from the Royal Society of Chemistry in 2020. He is Vice-President to the European Rare Earth and Actinide Society and he has engaged extensively in online public engagement activities.

Fellows



LOGAN Mark

Professor in Practice,
University of Glasgow

Mark has over 25 years of senior leadership experience in the internet technology sector. He was instrumental in the success of multiple start-ups, including as COO of Skyscanner. Mark has been awarded Institute of Directors Director of the Year (2014), UK Digital Masters award for Excellence in General Management (2016) and holds an Honorary Doctorate of Science (University of Glasgow, 2019). Mark is now a start-

up/scale-up advisor, investor and non-executive director in Scotland and internationally. He is a Professor at the University of Glasgow's School of Computing Science, a Senior Fellow at University of Strathclyde's Innovation Centre and a Scottish Government advisor on technology policy. Mark leads the government's high tech sector development programme following the Scottish Technology Ecosystem Review he authored in 2020.

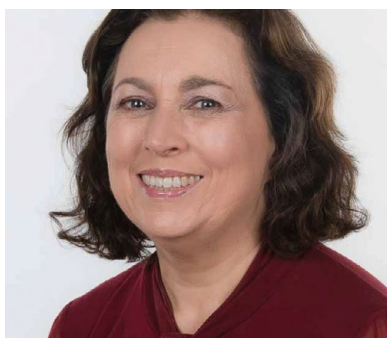


MACEWEN Caroline DBE

Honorary Professor of Ophthalmology,
University of Dundee

Caroline (Carrie) is an ophthalmologist with interests in paediatric eye disease and disorders of ocular movements and has published widely in these fields with particular emphasis on the epidemiology of eye disease. She has always worked as a full time clinician – until retire and return in 2017 – with an active role in post-graduate medical education / assessment and development of the multi-

disciplinary healthcare team. More recently she has been involved in healthcare service development and professional leadership roles – exploring new ways of delivering care, health quality improvement programmes and the regulation of medical professionals.



MAIR Frances

Norie Miller Professor of General Practice and Head of
General Practice and Primary Care, University of Glasgow

Professor Frances Mair is a General Practitioner who undertakes mixed methods research focusing on optimising the care of people with chronic illness, frailty and multimorbidity with a particular emphasis on the potential role for digital health. Her work considers the wider socioeconomic environment and social contexts in which people live and the importance of understanding implementation

issues to help bridge the translational gap between research and clinical practice.

Fellows



MARSTON Adele

Professor of Cell Biology and Director of the Wellcome Centre for Cell Biology, University of Edinburgh

Professor Adele Marston is a cell biologist who investigates how the genome is inherited during reproduction. Her research group use model organisms to identify genes, proteins and fundamental pathways that organise and sort chromosomes into new cells as they divide. Using patient-donated human eggs and informed by their studies in model organisms, the group investigate potential causes of female infertility and the effects of maternal age. Professor Marston is Director of the Wellcome Centre for Cell Biology and co-Director of an interdisciplinary PhD programme.



MEAD Gillian

Professor of Stroke and Elderly Care Medicine, University of Edinburgh

Professor Mead is an internationally acclaimed expert in stroke medicine. Her research focuses on improving stroke survivors' quality of life. She has more than 180 publications in peer reviewed journals, and her work is included in clinical guidelines all over the world. She is the 2021-2023 president of the British and Irish Association of Stroke Physicians. She co-chairs the World Stroke Organisation guideline committee. She won the 2020 Lady Illingworth Award (Tenovus Scotland) and the 2016 William Farr Medal (Worshipful Society of Apothecaries). She also plays clarinet in the Really Terrible Orchestra and climbs Munros with the Edinburgh Mountaineering Club.



NARAYANAN Daisy MBE

Head of Placemaking and Mobility, City of Edinburgh Council

Daisy Narayanan is the Head of Placemaking and Mobility at the City of Edinburgh Council where she leads on delivering a city-wide integrated approach to transport and placemaking. She trained as an architect and urban designer and over the last decade, her work has focussed on sustainable transport and climate action. Drawing on her previous experience working in India, Singapore, England and Scotland, Daisy believes passionately in the importance of creating inclusive places for people: places that reflect and complement the communities that live in them. A music aficionado, a bookworm and a linguist, Daisy spends her time enjoying the Scottish outdoors with her husband and two children.

Fellows



NÄTHKE Inke

Associate Dean for Professional Culture,
University of Dundee

After obtaining her PhD at the University of California, San Francisco, Professor Inke NÄthke completed postdoctoral work at Stanford and Harvard University. She joined the University of Dundee in 1998, where she is Professor of Epithelial Biology. Her research aims to understand the earliest changes accompanying tumour formation and inflammation in the intestinal tract, focussing on functions of the Adenomatous Polyposis

Coli protein. Her experimental approaches operate at scales from molecules to tissue. They include biological, physical, and mathematical methods. Her leadership in improving research culture reflects her deep commitment to improving diversity and inclusion and the recognition that only diverse, inclusive research communities deliver the best for society.



NGWENYA Bryne

Professor of Microbial Geochemistry and Head of
School of GeoSciences, University of Edinburgh

Professor Bryne Ngwenya conducts fundamental research in understanding relationships between bacteria and their environment as a basis for predicting human-environment interactions. His work has revealed the strategies by which bacteria detoxify environmental pollutants, including pioneering a new model of how bacteria confer plant resistance to metal toxicity. This model underpins

new methods for using plants to extract toxic metals from contaminated environments, a major strategic issue for industrialised countries. He is passionately committed to public service; having served as a Trustee of the Geological Society, and being a founding member of the EDI Committee of the European Association of Geochemistry.



NORRIE John

Chair of Medical Statistics and Trial Methodology,
University of Edinburgh

John Norrie is a medical statistician and clinical trialist, dedicated to improving health through randomised trials. John has led academic Clinical Trials Units in Aberdeen and Edinburgh, having started his career in Glasgow. John is involved in global health initiatives and chairs various national funding boards, and provides independent oversight for landmark trials. John was elected a Fellow of the Society for Clinical Trials

(2015) and Faculty Public Health (2018). John is fascinated by using randomised designs not just in medicine but in business, education, and justice; and is happiest when advising on trial design, and when wandering in the beautiful Scottish cities and countryside.

Fellows



Ó MAOLALAIGH Roibeard

Professor of Gaelic; Head of College of Arts
and Vice-Principal, University of Glasgow

Professor Ó Maolalaigh has expertise in the Gaelic languages across all historical periods down to the present day. His published works engage with the major areas of Gaelic linguistics. He has a particular interest in the historical development of the Gaelic languages and their emergence in modern forms. His research includes linguistic variation, Gaelic dialectology, corpus linguistics, lexicology, onomastics and Gaelic manuscript collections of the modern period. He has developed a range of externally funded pioneering initiatives, which include digital humanities resources to transform advanced research and learning in Celtic and Gaelic Studies, many of which are of direct relevance to language policy in Scotland



O'CONNOR Rory

Professor of Health Psychology,
University of Glasgow

Rory O'Connor is Professor of Health Psychology at the University of Glasgow, President of the International Association for Suicide Prevention and a Past President of the International Academy of Suicide Research. Rory leads the Suicidal Behaviour Research Laboratory at Glasgow. He has published extensively in the field of suicide and self-harm, specifically concerning the psychological processes which precipitate suicide. He is also co-author/editor of several books and is author of the recent book *When It is Darkest*. Rory acts as an advisor to a range of national and international organisations including national governments on the areas of suicide and self-harm.



OVENDEN Richard OBE

Bodley's Librarian,
University of Oxford

Richard Ovenden is Bodley's Librarian at the Bodleian Libraries, and Head of Gardens, Libraries, and Museums at the University of Oxford, and a Fellow of Balliol College. He is a leading figure in the world of libraries, archives and museums, especially in the fields of digital information management and digital preservation. His research focuses on the place of libraries, archives and museums in society, with a focus on the theory and practice of the preservation of knowledge over time. He also teaches and researches on the history of photography, especially as related to Scotland.

Fellows



PATRICK Adele

Creative Development Manager,
Glasgow Women's Library

Adele Patrick has been developing innovative cultural projects rooted in equalities for over 30 years. A co-founder of Glasgow Women's Library (GWL) (www.womenslibrary.org.uk) Adele has had a leadership role in this change making organisation since 1991 and is currently a Co-Director. Trained as a designer at Glasgow School of Art (GSA) she has collaborated throughout her career with creatives

locally and internationally (and received the Engage Scholarship for Excellence in Gallery Education in 2016). In 2016 Adele gained Honorary Doctorates from the GSA and from Strathclyde University and became Scotswoman of the Year. A Clore Leadership Fellow in 2018/2019, her Post Fellowship research has focused on feminist leadership.



PEARCE Jamie

Professor of Health Geography and Director, Scottish
Graduate School of Social Science, University of Edinburgh

Jamie Pearce is Professor of Health Geography at the University of Edinburgh, where he is co-Director of the Centre for Research on Environment Society and Health (CRESH), and Director of the ESRC Scottish Graduate School for Social Science. Professor Pearce's research seeks to understand various social, political and environmental mechanisms operating at a range of geographical

scales that establish and perpetuate spatial inequalities in health over the lifecourse. He is Editor-in-Chief of the international journal Health and Place, and is founding co-Editor-in-Chief of the recently established journal Wellbeing, Space & Society.



PEARSON Ewan

Professor of Diabetic Medicine,
University of Dundee

Ewan Pearson is a Professor of Diabetic Medicine at the University of Dundee. His research focuses on how people with diabetes differ from each other in their clinical characteristics and their genetics, and how this difference impacts on how drugs work and the long-term outcomes of their diabetes. This will enable a more precise management and better care for people with diabetes.

Fellows



PROUD Peter

Visiting Professor at University of Strathclyde and CEO, Forrit

Peter Proud is passionate about innovation, business, and the development of young talent. Having spent most of his career working in Microsoft in a very innovative and entrepreneurial role, he has returned to Scotland to start a software business focusing on making great software, developing young raw talent and delighting clients. Peter is active as an ambassador for Young Enterprise Scotland and on the Digital

Transformation Board for Scottish Government. He sees Scotland as a world leader in innovation that sometimes struggles to commercialise these inventions/advancements. Peter would love to help Scotland become more prosperous through this commercialisation and become a thought leader in the next generation of green, healthy, and prosperous living.



REID Gill

Professor of Inorganic Chemistry, University of Southampton

Professor Gill Reid is a chemist who focuses on experimental inorganic, coordination chemistry and organometallic chemistry both to develop fundamentally new classes of molecules and to explore their applications towards functional thin film materials and fluoride carriers for applications in medical imaging. She has a long-standing interest in the development of young people in STEM

subjects and has been active in promoting science in schools through various outreach and related activities for over 20 years. Gill is a Fellow of the Royal Society of Chemistry and is currently President-elect of the RSC, becoming President from 2022 to 2024.



REID Melanie MBE

Author, Times Writer & Columnist

Melanie Reid is a writer and journalist with The Times. Since 2010, when she fell from her horse and broke her neck she has written Spinal Column, an award-winning account of life with severe disability. She lectures to improve better understanding, awareness of and communication about disability. She supports rural community enterprise, loves wildlife, bird-watching and art and serves on the board of the Fruitmarket Gallery. Her memoir The

World I Fell Out Of was published in 2019 and won the Saltire Prize for non-fiction.

Fellows



RIGBY Susan
Vice Chancellor,
Bath Spa University

Sue is Vice Chancellor at Bath Spa University. Prior to this role, she held senior leadership positions at the Universities of Lincoln and Edinburgh. Sue chairs the Cultural Compact for the West of England and has developed a Cultural Strategy and Strategic Plan for the region. Sue has a background as an academic palaeontologist, and has a national profile in learning and teaching.

She is a strong advocate for creativity in education and sits on the boards of Project Trust and Mull Little Theatre. She chairs the Board of Trustees of Student Minds, a national charity focussed on student mental health and wellbeing.



ROSSER Susan
Chair of Synthetic Biology, University of Edinburgh
and RAEng Chair in Emerging Technologies

Susan Rosser is Professor of Synthetic Biology at the University of Edinburgh. She also holds a Royal Academy of Engineering Chair in Emerging Technologies focused on Engineering Biology. She is the director of the UK Centre for Mammalian Synthetic Biology and co-director of the Edinburgh Genome Foundry a fully automated DNA assembly platform offering end-to-end design, construction and validation of genetic

constructs. Her research focuses on developing genetic tools for engineering cells to produce biologic drugs and molecules of industrial interest. She is deputy chair of the BBSRC Committee D and a member of the EPSRC Science and Engineering Technology Board.



RUSSELL Leigh-Ann
Executive Vice President, Innovation and Engineering,
BP

Leigh-Ann was appointed to BP's executive leadership team as EVP, Innovation & Engineering with effect from March 1, 2022. Leigh-Ann was previously the chief procurement officer, where she was accountable for a safe, ethical, and competitive supply chain of circa \$30B of spend. Her main career has spanned 20 years of engineering and operational experience including leadership roles across BP's global

portfolio. Leigh-Ann is a non-Executive director on the board at Hill & Smith Holdings PLC. She holds a degree in Mechanical Engineering, is a Chartered Petroleum Engineer, Fellow of the Royal Academy of Engineering, and Fellow of the Energy Institute.

Fellows



RUTZ Christian

Professor of Biology,
University of St Andrews

Professor Christian Rutz has broad interests in behavioural and evolutionary ecology, advanced animal tracking technologies, conservation science and policy making, and research practice. A keen fieldworker, much of his research is driven by a deep curiosity about, and desire to protect, the natural world. Rutz is well-known for his studies on tool-using crows, his contributions to bio-logging science, and his efforts to improve research reproducibility. He is Founding President of the International Bio-Logging Society and Chair of the COVID-19 Bio-Logging Initiative. Rutz was a Rhodes Scholar, BBSRC David Phillips Fellow and Radcliffe Fellow, and is currently a National Geographic Explorer.



RYCROFT Philip CB

Senior Distinguished Visiting Fellow, Bennett Institute
for Public Policy, University of Cambridge

Philip Rycroft was a civil servant for 30 years. He worked for the devolved government in Scotland and for the UK government in Whitehall. A major focus through his career was on devolution and broader constitutional issues, including the impact of Brexit. These remain his interests in his new life as an academic and contributor to public debate. He is also active as a non-executive director, with a particular focus on the regulatory interface between business and government.



SHARKEY Jeffrey

Principal,
Royal Conservatoire of Scotland

Pianist and composer Professor Jeffrey Sharkey became Principal of the Royal Conservatoire of Scotland in September 2014, leading Scotland's national conservatoire of dance, drama, music, production and screen. Jeffrey served as Director of Johns Hopkins University's Peabody Institute from 2006-2014. Jeffrey Sharkey is a graduate of the Manhattan School of Music where he was the conservatory's first double major in piano and composition. He earned a Master of Music degree in composition from Yale University and an MPhil from the University of Cambridge. His expertise is in the performing arts, arts advocacy, arts leadership and especially in music as a pianist, chamber musician and composer.

Fellows



SHAW Donald

Musician/Composer and Artistic Director,
Celtic Connections

Donald Shaw is an acclaimed Scottish musician, producer, festival director and award-winning composer. He is currently Artistic Director for the Celtic Connections festival. Donald has recorded and collaborated on over 100 albums with musicians in all styles of music, composed extensively for film and TV and directed large-scale live commissions. His compositions have been performed by the BBC

London Philharmonic, the Halle Orchestra, BBC Scottish Symphony Orchestra, Royal Scottish National Orchestra and Scottish Chamber Orchestra. Donald has produced live music projects for National Theatre of Scotland, Edinburgh International Festival, Womad UK, BBC Proms, London Olympics 2012 and Commonwealth Games Festival 2014, and he owns the independent label 'Vertical Records', which has released over 40 acclaimed albums. Donald also co-founded and has toured worldwide with Scots folk band Capercaillie.



SHEARER Theresa

Chief Executive Officer,
ENABLE Group

Theresa Shearer is one of the third sector's most respected and influential leaders, having made a significant impact in the UK and internationally. Theresa led the transformation and growth of an important group of charities delivering an equal future for Scotland's citizens. As CEO of ENABLE Group, she inspires public policy developments driving and delivering human rights advocacy, sustainable employment

and training, and excellent self-directed social care for all. Theresa is a Commissioner on the UK Law Family Commission on Civil Society and Vice President of Inclusion Europe, working to end segregation and institutionalisation of disabled people across Europe.



STEWART Mhairi

Public Engagement Manager,
Museum für Naturkunde

Dr Mhairi Stewart is the Public Engagement Manager for the Berlin School of Public Engagement and Open Science. Through her work she supports national and international community and network building for the School and the field of public engagement, bringing the public, academia, industry and policy makers into productive dialogues for mutual benefit. She undertakes interdisciplinary research on the

boundaries of current engagement theory and practice, evidencing the value of engagement to institutions and research individuals as well as audiences. She is a founding member of the Scottish Public Engagement Network and a member of the Young Academy of Scotland.

Fellows



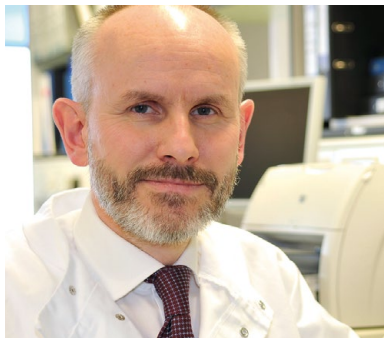
STIHLER Catherine OBE

Chief Executive Officer,
Creative Commons

Catherine Stihler has been an international champion for openness as a legislator and practitioner for over 20 years. As CEO of Creative Commons, the global not-for-profit advancing better sharing on-line, Catherine's key interests rest upon opening knowledge and culture globally for everyone, everywhere. This involves advocating for public interest technology such as CC licenses, campaigning for global copyright/IP law reform

which supports the public good, enabling content creators to be heard, and engaging with an international community. Her current interests are in the nascent Better Internet Campaign, the intersection of Web 3 with public interest technology, and defining better sharing on-line.

Photo: "Catherine Stihler" by Martin Shields, licensed under CC BY 4.0



TURNER Marc

Director,
Scottish National Blood Transfusion Service

Marc Turner is Director of the Scottish National Blood Transfusion Service and Professor of Cellular Therapy at the University of Edinburgh. His interests include the risk of transmission of prion diseases by blood, tissues and cells and the translation of advanced therapy medicinal products to clinical practice. He is a Member of the Advisory Committee on the Safety of Blood, Tissues and Organs,

of the Scottish Medicines Consortium and a Commissioner on the Commission on Human Medicines and a member of its Clinical Trials, Biologicals and Vaccines Expert Advisory Group and COVID19 Vaccine Benefit Risk Expert Working Group.



URQUHART Linda OBE

Non-Executive Director,
Edinburgh Airport and Coutts & Co

Linda Urquhart is an experienced non-executive director with a background as a lawyer. Linda currently sits on the boards of Edinburgh Airport and Coutts & Co. In the charitable sector she is a Trustee of Marie Curie and President of Girlguiding Scotland. In the past, Linda has been involved in policy as Chair of CBI Scotland, as a board member of the CBI and Scottish Enterprise and as Co-Chair of the Fair Work Convention.

Her interests lie in how we build and sustain successful business and third sectors, good governance and decision making, the workplace, and diversity and social inclusion.

Fellows



WALDEN Helen

Professor of Structural Biology,
University of Glasgow

Professor Helen Walden obtained her PhD from the University of St Andrews in 2001. She returned to Scotland in 2013, and is currently Professor of Structural Biology at the University of Glasgow. Her research is aimed at understanding how ubiquitin signals control biological processes, from a molecular perspective, and with a particular interest in neurodegeneration and cancer.

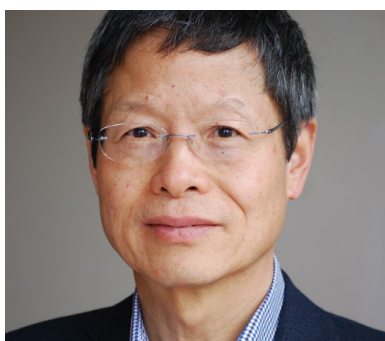


WANG Cheng-Xiang

Professor of Wireless Communications, Institute of
Sensors, Signals and Systems, Heriot-Watt University

Cheng-Xiang Wang is a Professor of Wireless Communications at Heriot-Watt University and Southeast University. He has made significant contributions to 5G/6G wireless channel modelling and 5G cellular architecture, widely adopted by academia, industry and standardisation organisations. His current research interests are in wireless channel measurements and modeling, 6G intelligent wireless

communication networks, and electromagnetic information theory. As a Member of the Academia Europaea (MAE), a Fellow of the IEEE and IET, a Highly-Cited Researcher recognized by Clarivate Analytics, he has published 3 books and over 450 papers, and delivered 23 invited keynotes/talks and 9 tutorials in international conferences.



WANG Ya Ping

Professor in Urban Studies,
University of Glasgow

Professor Ya Ping Wang's research focus on urbanisation, housing, inequality, migrants, urban social and neighbourhood changes in China and other developing countries in Asia and Africa. His work has been funded by the UK Research and Innovation, Economic and Social Research Council, Department for International Development, British Academy, Leverhulme Trust and several

international organisations. Ya Ping is the Director and Principal Investigator of the Centre for Sustainable, Healthy and Learning Cities and Neighbourhoods (SHLC), an eight country collaborative project funded by the UK Global Challenge Research Fund.

Fellows



WEBB Barbara

Professor of Biorobotics,
University of Edinburgh

Barbara Webb is Professor of Biorobotics at the University of Edinburgh. She investigates how insects perform flexible and robust behaviours, and implements the hypothesised mechanisms as robot controllers. This novel methodology has led to breakthroughs in understanding the brain circuits underlying insect navigation. She has used public interest in this work to promote science communication. At Edinburgh's School

of Informatics she has made important contributions as Director of the Graduate School and Director of the Institute for Perception, Action and Behaviour. Outside her scientific career she is active in music, performing with the medieval music ensemble Gaita, and in the visual arts.



WOODHEAD Linda MBE

F.D. Maurice Chair in Moral and Social Theology,
King's College London

Linda Woodhead is an expert on religion, beliefs and values. Her books include *The Spiritual Revolution* (with Paul Heelas), *A Sociology of Religious Emotions* (with Ole Riis), *A Very Short Introduction to Christianity and Gen Z*, *Explained* (with Roberta Katz, Sarah Ogilvie and Jane Shaw). Linda led the UK's £12m AHRC/ESRC 'Religion and Society' research programme in 2007-12 and co-founded the Westminster Faith Debates.

She has held visiting positions in Bern, Hanover, Lucerne, Manila, Münster, Princeton, and Stanford, and has honorary degrees from the Universities of Oslo and Uppsala.



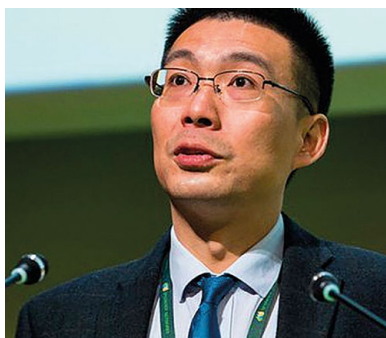
WOOLMAN Lord Stephen

Senator of the College of Justice and President
of Scottish Tribunals, Scottish Courts

Stephen Woolman is a Senator of the College of Justice and President of Scottish Tribunals. He was a lecturer in law at Edinburgh University from 1978 - 87, where he published *Woolman on Contract*, now in its sixth edition. He became an advocate at the Scots Bar in 1987 and took silk in 1998. From 2004 until 2008 he was the Keeper of the Advocates Library and a trustee of the National Library of Scotland. He has also been

the head of the Boundary Commission for Scotland and the Judicial Institute for Scotland.

Fellows



YU James MBE

Future Networks,
SP Energy Works

James is a chartered engineer, an elected IET (Institute of Engineering and Technology) Fellow and a Royal Engineering Academy Professor. James is the deputy UK Regular Member, International Large Networks Congress: CIGRE, and chairing the Medium Voltage DC group. James has taken various technical, commercial and senior managerial roles in the UK transmission/distribution industry

following his studies at Newcastle upon Tyne. James is currently accountable for the innovation at ScottishPower Energy Networks: working on flagship innovation projects at national and European level, and pushing the innovation into business. He received MBE for his outstanding contribution to the electricity supply industry 2019.



ZAZAI Sabir

Chief Executive Officer
Scottish Refugee Council

Sabir has been CEO of Scottish Refugee Council since 2017 and was previously CEO of Coventry Refugee and Migrant Centre. Sabir arrived in the UK from Afghanistan in 1999, and his work draws from his own experiences and expertise in community integration and cohesion and refugee rights. Sabir graduated from Coventry University with a Masters in Community Cohesion Management and was

awarded an Honorary Doctorate from the University of Glasgow and the Lord Provost award for human rights. Sabir is Honorary President of City of Sanctuary and a Visiting Practice Fellow at the Centre for Trust Peace and Social Relations at Coventry University.

“Considering Scotland’s size, our talent exceeds expectations across academia, culture and business. Celebrating and harnessing this breadth of expertise has been core to the RSE since its inception in 1783.”

Professor Zoe Shipton FRSE

Fellowship Secretary



CREATED IN 1783 BY ROYAL CHARTER
SCOTTISH CHARITY NO. SC000470

22–26 George Street
Edinburgh
EH2 2PQ

Telephone: +44 (0)131 240 5000
Email: info@theRSE.org.uk

Discover more at rse.org.uk