

*The RSE has a unique story to tell
and holds a special place in both Edinburgh
society and Scotland's intellectual culture*

RSE VENUE

THE *perfect* LOCATION





Welcome

Under its copper green dome and behind its distinctive facades on the intersection of Hanover Street and George Street, lies the hidden gem of the RSE - the Royal Society of Edinburgh - Scotland's National Academy.

The RSE offers a choice of resplendent rooms with an ambience to spark the imagination. Spaces where past luminaries like Sir Walter Scott and James Clerk Maxwell have trod, as well as contemporary laureates as diverse as JK Rowling and Peter Higgs.

Meet where fine minds meet.

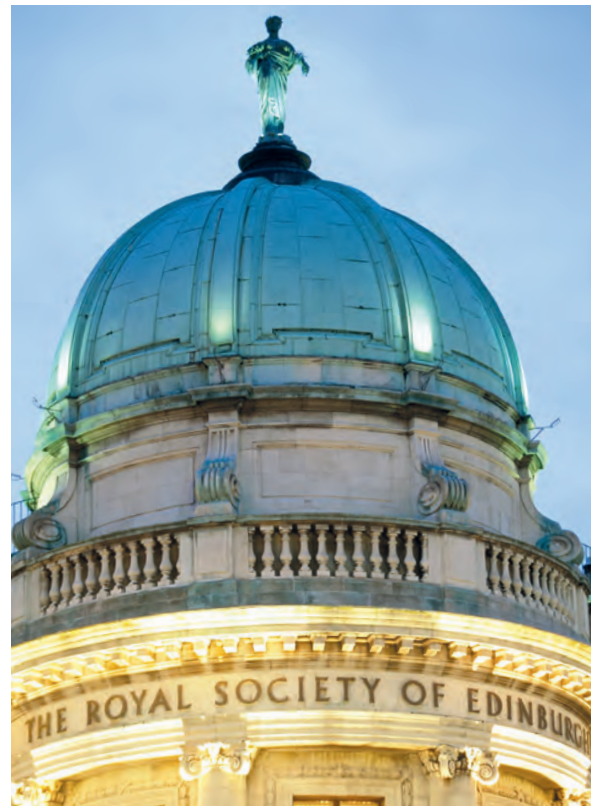
Clink glasses at the font of knowledge.

Tread where luminaries have trod, and still tread.

We can host intimate meetings, large receptions, conferences, lectures, away-days and exclusive dinners in a variety of rooms to suit any occasion. There are AV and tele/video conferencing facilities on request and lift access to every room except the Lower Gallery. Our first-class venue team are also on hand to provide the quality of service to make your event a real success.

If you want your event to be both meaningful and memorable, you couldn't find a better, more centrally located venue than the RSE.

www.rse.org.uk/venue rooms@theRSE.org.uk



The Royal Society of Edinburgh VENUE



“I know I’m not much good at business, but I have a son who is a financial genius.”

Solomon Wolfson, about Isaac, aged nine and living in the Gorbals. (Sir) Isaac became a businessman and philanthropist and set up the Wolfson Foundation in order to re-distribute most of his fortune to good causes.

Wolfson Lecture Theatre

Our bright, air-conditioned lecture theatre, refurbished with support from the Wolfson Foundation, accommodates up to 145 people and an additional 60 delegates can be seated in the adjoining Upper Gallery. The AV equipment includes a data projector for laptop, video or DVD display, microphones and an excellent amplifier. There are lighting and presentation controls at the lectern and in the AV cubicle at the back of the theatre. There is a full induction loop system for those with hearing difficulties and there is provision for people with sight impairment, wheelchair access and a disabled toilet facility.

CAPACITIES

Theatre	145
Area	92m ²





*“If you can not measure it,
you can not improve it.”*

Lord Kelvin FRSE, thermodynamics pioneer and
three times President between 1873 and 1907,
elected 1847

Kelvin Room

This room, named in honour of the renowned mathematical physicist and engineer William Thomson, 1st Baron Kelvin, is a magnificent room that makes a superb dinner venue as well as an impressive meeting space. Kelvin was an intellectual giant of the Victorian era and three times President of the RSE. The room with its rich, velvet wallpaper is sumptuous and warm, providing a graceful space for intimate gatherings.

CAPACITIES

Banquet	18
Boardroom	18
Area	60m ²





“What I have to say is far more important than how long my eyelashes are.”

Sir Walter Scott PRSE, literary great and President of the RSE from 1820-1832, elected 1800



Scott Room

With ornate cornicing, priceless paintings, a period fireplace and antique furniture, this is a splendid room that reflects the character of one of Scotland's literary giants, Sir Walter Scott, a past President of the RSE. The room can be set up in a variety of styles and can be used in conjunction with the adjoining Turner Room as a catering area. A portrait of Scott himself casts a discerning eye over your discussion, training session or celebratory dinner. Register your arrivals under the stunning cupola directly outside the entrance door and make a lasting first impression.

CAPACITIES

Banquet	40
Boardroom	22
Cabaret	24
Reception	60
Theatre	40
Area	68m ²



“Are we happy to suppose that our grandchildren may never be able to see an elephant except in a picture book?”

Sir David Attenborough FRSE, natural historian and broadcaster, elected 2005



Wellcome East Room

Created in 1983 with the generous support of the Wellcome Trust, this marvellous, gallery-style room is adorned with paintings and pictures. The high ceilings and chandeliers give it a palatial ambience, lending gravitas and style to any occasion. It is perfect for presentations, workshops, training and receptions and it benefits from a dedicated servery. It is connected directly to Wellcome West Room and the two rooms can be used together to provide a large event space.

CAPACITIES

Banquet	40
Boardroom	30
Cabaret	40
Classroom	20
Reception	80
Theatre	60
Area	78m ²



“I think you shouldn’t underestimate the difficulties of this research.”

Sir Ian Wilmut FRSE, cell and molecular biologist,
elected 2000

Wellcome West Room

In keeping with the rest of the accommodation, this is a spacious and elegant room which provides views to Edinburgh Castle. A dozen chandeliers throw light on tastefully decorated walls highlighting the RSE’s history. Perfect for large celebratory occasions, it has a built-in dance floor and its own servery. Used in conjunction with Wellcome East Room, or on its own, it has the capacity to handle major occasions.

CAPACITIES

Banquet	90
Boardroom	34
Cabaret	60
Classroom	30
Reception	120
Theatre	80
Area	203m ³





“The older I get I think (poetry) is not about voice, it’s about listening and the art of listening, listening with attention.”

Kathleen Jamie FRSE, writer, elected 2018

Upper Gallery

A contemporary space with sprung wooden floorboards, whitewashed walls and a glass apex ceiling, this is a very versatile area that can be also set up for exhibitions or lectures. Leading directly into the Wolfson Lecture Theatre, and connecting via a spiral staircase to the Lower Gallery below, it works perfectly on its own or when used in combination with adjoining spaces for arrival coffees, breakout sessions, workshops or receptions. With its modern style, the Upper Gallery offers a striking contrast to the historic grandeur of the main reception area from which it can also be accessed.

CAPACITIES

Banquet	30
Boardroom	24
Cabaret	30
Classroom	30
Reception	80
Theatre	60
Area	66m ²



Lower Gallery

Another contemporary, flexible space, which is ideal for exhibitions, receptions, breakout, training or workshops. The neutral design means you can dress this space in your personal or corporate style and make it very much your own. It is connected by spiral staircase to the Upper Gallery above, and also has access to the Swann Room.

CAPACITIES

Boardroom	18
Cabaret	18
Classroom	15
Reception	20
Theatre	28
Area	38m ²



MacRobert Room

This secluded, elegant library is perfect for private dinners as well as strategic meetings where deep, thoughtful discussions are the order of the day. It is named after the MacRobert Trust, which provided the RSE with funding during a past refurbishment. It can accommodate up to 12 people for a dinner or meeting.

CAPACITIES

Boardroom	12
Area	25m ²



Swann Room

Named after the distinguished molecular and cell biologist Baron Michael Swann, this is a very practical workspace, ideal for presentations and breakout sessions. In its quiet setting on the lower ground floor it is also perfect for training courses and examinations.

CAPACITIES

Boardroom	20
Cabaret	28
Classroom	30
Theatre	32
Area	75m ²



Auerbach Room

Another traditional and elegant room with a high ceiling and a large window this is a bright, airy space suitable for seminars, workshops or meetings. It can accommodate up to 15 people, boardroom style, and it is also ideal as a syndicate or breakout room if you are holding a larger event. The room is named after Charlotte Auerbach, an outstanding geneticist, and one of the first female Fellows elected to the RSE.

CAPACITIES

Boardroom	15
Classroom	6
Reception	20
Theatre	18
Area	30m ²

“Thoroughly conscious ignorance is the prelude to every real advance in science.”

James Clerk Maxwell FRSE, outstanding Scottish scientist and “hero” of Einstein, elected 1856



James Clerk Maxwell Room

Directly off the main entrance hall, this elegant room, with cornicing and period marble fireplace, is perfect for meetings, seminars and small receptions. It is dedicated to James Clerk Maxwell, a past Fellow of the RSE and Scotland’s greatest physical scientist. The room contains original papers by Maxwell and has a calm, reflective atmosphere. A feature of the room is a hologram of Alexander Stoddart’s statue of James Clerk Maxwell that was erected at the east end of George Street in November 2008.

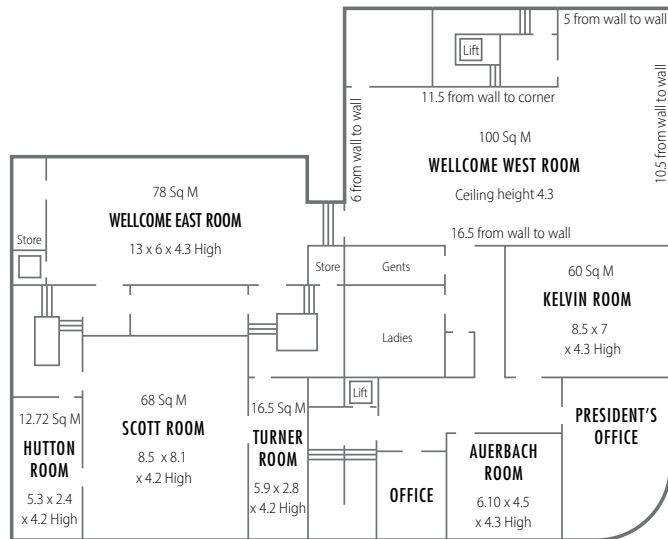
CAPACITIES

Banquet	15
Boardroom	16
Classroom	14
Reception	20
Theatre	20
Area	35.5m ²

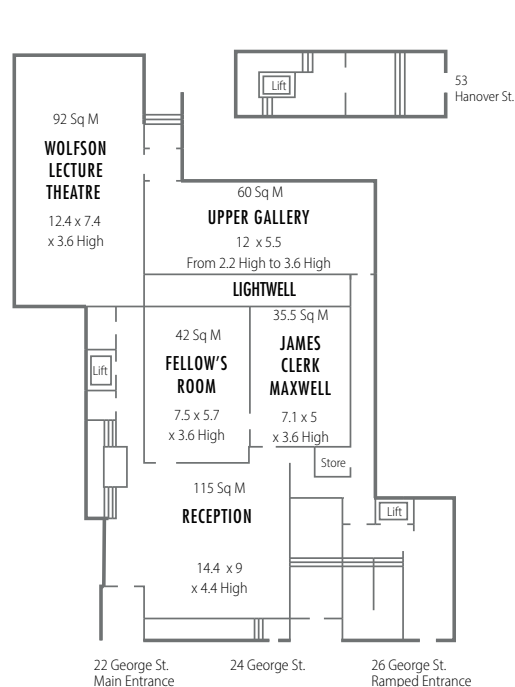


Floor Plans

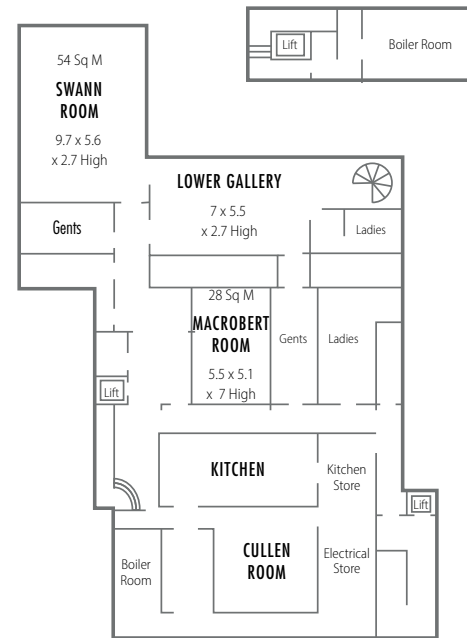
Not to scale. All measurements are in metres.



FIRST FLOOR



GROUND FLOOR



LOWER GROUND FLOOR



Established in 1783 to advance learning and useful knowledge and a child of the Scottish Enlightenment, the RSE is a living link to that era-defining movement of discovery, intellectual advances and scientific achievements. Our current vision is to play a leading role in today's enlightenment, harnessing a diversity of expertise and experience and deploying that knowledge and learning for the benefit of Scotland, its people and the wider world – in the words of our mission *'knowledge made useful'*.

For more information about the work of the RSE please visit www.rse.org.uk and please, come and see the rooms for yourself. Our venue team is waiting to provide you with all the details and help make your event a success right here in the heart of Edinburgh's New Town.

To make an appointment to view please contact us on rooms@theRSE.org.uk





The Royal Society of Edinburgh VENUE



*The Royal Society
of Edinburgh*

KNOWLEDGE MADE USEFUL

22-26 George Street,
Edinburgh,
EH2 2PQ
T +44 131 240 5034
E: rooms@theRSE.org.uk
W: www.rse.org.uk/venue

*The Royal Society of Edinburgh's venue is managed
by the RSE Scotland Foundation*



THE RSE SCOTLAND FOUNDATION IS A CHARITABLE BODY
CONNECTED TO THE ROYAL SOCIETY OF EDINBURGH.
SCOTTISH CHARITY NO. SC024636
VAT REGISTRATION NO. 671 3340 52



We look forward to welcoming you